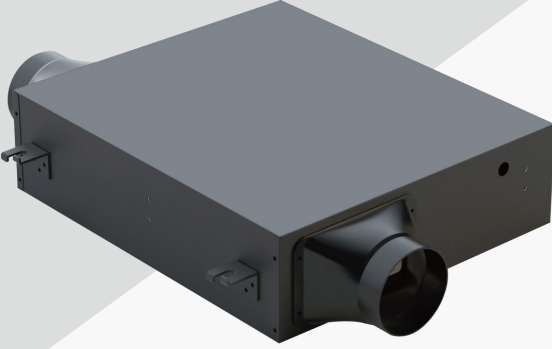


## Slim Silent In-Line Series



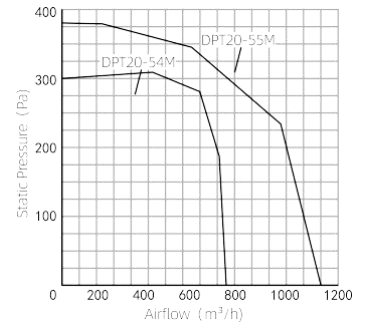
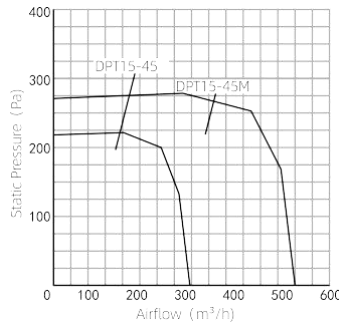
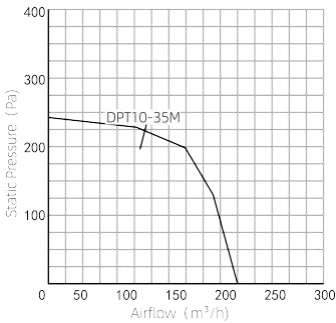
### Features

- **Extremely silent & Stable operation**
- **High air pressure, long distance air supply**
- **Slim fan body, easy installations**
- **Pure copper motor, ball bearing**
- **Low power consumption**

Slim high performance in-line extractor with ultra quiet turbine fan designed for ducted ventilation suitable for both residential and commercial use.

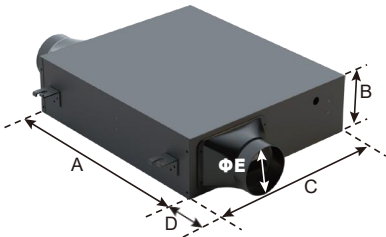


### Performance Curve



### Product Specification

unit: mm



Model	A	B	C	D	ΦE
DPT10-35M	367	120	420	88	100
DPT15-45	367	200	420	88	150
DPT15-45M	367	200	420	88	150
DPT20-54M	367	250	420	88	200
DPT20-55M	367	250	420	88	200

Model	Voltage	Speed	Power	AirVolume	Static Pressure	Noise	Duct Diameter
DPT10-35M	220V-50Hz	H/L	45/30W	230/180m <sup>3</sup> /h	160Pa	25dB	φ100mm
DPT15-45	220V-50Hz	H/L	60/45W	350/250m <sup>3</sup> /h	220Pa	30dB	φ150mm
DPT15-45M	220V-50Hz	H/L	75/55W	600/450m <sup>3</sup> /h	260Pa	34dB	φ150mm
DPT20-54M	220V-50Hz	H/L	85/75W	920/700m <sup>3</sup> /h	365Pa	38dB	φ200mm
DPT20-55M	220V-50Hz	H/L	115/85W	1200/1050m <sup>3</sup> /h	410Pa	45dB	φ200mm